

OPEN LIVESTOCK

Livestock Superintendent – Clinton Brownlie

Livestock Clerk – Shannon Blake

Livestock Office Hours:

Tuesday through Saturday 7:00 am to 7:00 pm

Sunday 8:00 am to 6:00 pm

**LUCIAN VAIRA MEMORIAL AWARD
CHAMPION BEEF EXHIBITOR
Sponsored By JOE & DOROTHY VAIRA**

A buckle will be awarded to the all-around Champion Beef Exhibitor from the Local Pen Show in memory of Lucian Vaira, past Fair Director and Cattleman. Champion Beef Exhibitor will be determined at judge's discretion using the following guidelines – quality, placing, quantity, and presentation.

LOCAL PEN SHOW

FORMS & FEES DUE BY: Saturday, July 11, 6 pm
Livestock In Place By: Wednesday, July 29, 8 pm
Entries Judged: See Livestock Judging Schedule
Entries Released: Sunday, August 3, 6 pm

LUCIAN VAIRA MEMORIAL AWARD CHAMPION BEEF EXHIBITOR Sponsored by JOE & DOROTHY VAIRA

READ YOUR LIVESTOCK RULES

Open to Amador, El Dorado, Sacramento and Calaveras County residents.

Due to weight variances, entries should be made by division only. Animals will be classified by class in accordance with instructions in Local Rules. All animals in each entry must be owned by one exhibitor.

No premium award will be paid on any animal that does not meet the weight requirements of the class.

Animals entered in weight divisions must arrive on the grounds in time to be weighed in on WEDNESDAY, JULY 29, BETWEEN 5:00 p.m. AND 8:00 p.m.

Clipping and grooming of animals is prohibited, so as to maintain their true range appearance.

Heifer is an animal under three years of age that has not calved.

By his signature as the owner or agent on an entry form, the exhibitor also certifies that the sire of each animal, entered in the following classes for grade animals, was either registered or purebred.

**RANGE REPLACEMENT HEIFERS
SIRE BY PUREBRED SIRE**

Entry Fee: \$11.50 per Pen of Three

LIMIT - 2 ENTRIES PER CLASS

Premiums Offered per Class				
1 st	2 nd	3 rd	4 th	5 th
\$50	\$40	\$30	\$20	\$10

Exhibitor is permitted to remove only one animal per pen to

compete in Division 4

DIVISION 4 - ALL BREEDS – Pen of Three

Registered, Purebred or Crossbreeds

Champion Pen of 3 Heifers

Sponsored by Brian & Janine Oneto

Reserve Champion Pen of 3 Heifers

Class		Calved
18.	Pen of 3 Heifers	Sept. 1, 05-Aug. 31, 06
19.	Pen of 3 Heifers	Sept. 1, 06-Aug. 31, 07
20.	Pen of 3 Heifers	Sept. 1, 07-Mar. 31, 09

SINGLE RANGE REPLACEMENT HEIFERS

Entry Fee \$3.50 per Entry

LIMIT - 2 ENTRIES PER CLASS

Premiums Offered Per Class				
1 st	2 nd	3 rd	4 th	5 th
\$40	\$30	\$20	\$10	\$5

DIVISION 5 - ALL BREEDS

Registered, Purebred or Crossbreeds Class

**Champion All Breeds Heifer
Reserve Champion All Breeds Heifer**

Class		Calved
21.	Single Heifer	Sept. 1, 05 Aug. 31, 06
22.	Single Heifer	Sept. 1, 06-Aug. 31, 07
23.	Single Heifer	Sept. 1, 07-Mar. 31, 09

SINGLE STOCKER AND FEEDER ANIMALS

Entry Fee: \$3.50 per Entry

LIMIT - 4 ENTRIES PER CLASS

Premiums Offered Per Class				
1 st	2 nd	3 rd	4 th	5 th
\$40	\$30	\$20	\$10	\$5

DIVISION 6 - HEREFORD

**Champion Hereford Steer
Sponsored by Bob & Kathy Hutchison**

Reserve Champion Hereford Steer

Champion Hereford Heifer

Reserve Champion Hereford Heifer

Class		Weight
24.	Steer	550 to 850 pounds
25.	Heifer	550 to 850 pounds

DIVISION 7 - ALL OTHER BREEDS

Registered, Purebreds or Crossbreeds

**Champion AOB Steer
Reserve Champion AOB Steer**

**Champion AOB Heifer
Reserve Champion AOB Heifer**

Class		Weight
26.	Steer	550 to 850 pounds
27.	Heifer	550 to 850 pounds

Anything other than straw or shavings is prohibited for livestock bedding.

Open Livestock Continued:

PEN OF STOCKER AND FEEDER ANIMALS

Entry Fee: \$11.50 per pen of five

LIMIT - 4 ENTRIES PER CLASS

Premiums offered Per Class				
1st	2nd	3rd	4th	5th
\$50	\$40	\$30	\$20	\$10

Exhibitor is permitted to remove only two animals per pen to compete in Divisions 6 and 7.

DIVISION 8 - HEREFORD

**Champion Hereford 5 Steers
Reserve Champion Hereford 5 Steers**

**Champion Hereford 5 Heifers
Reserve Champion Hereford 5 Heifers**

Class		Weight
28.	5 Steers	550 to 850 pounds
29.	5 Heifers	550 to 850 pounds

DIVISION 9 - ALL OTHER BREEDS

Registered, Purebreds or Crossbreeds

**Champion AOB 5 Steers
Reserve Champion AOB 5 Steers**

**Champion AOB 5 Heifers
Reserve Champion AOB 5 Heifers**

Class		Weight
30.	5 Steers	550 to 850 pounds
31.	5 Heifers	550 to 850 pounds

**FEATURE BREED
SHOW**

**DIVISION 10- Senior
HEREFORD CATTLE**

**FORMS & FEES DUE BY: Monday, July 11, 6 pm
Livestock In Place By: Wednesday, July 29, 8 pm
Entries Judged: See Livestock Judging Schedule
Entries Released: Sunday, August 3, 6 pm**

Note: Entries will be accepted on first come basis as long as space is available, until closing date of Monday July 6, 2009

Junior exhibitors & Junior organizations may be allowed to enter exhibits in Senior department classes for which they are eligible only when it allows participation in featured breed and/or sponsored Association shows. The Junior exhibitor must also exhibit the project in the Junior division.

**Open to all members of the
Hereford Association**

Registered Breeding Animals

Show Date: Saturday, August 1, 9:00 a.m.

Entry Fee: \$15.00 per entry per class

Premiums Offered Per Class

1st	2nd	3rd	4th	5th
\$80	\$65	\$55	\$45	\$35

In the event that sponsorship funds are received, funding will be used to increase the above premiums offered

Exhibitors must have the original registration certificate of each animal available for inspection upon checking in at the Livestock Office prior to the show.

SHOW CLASSES

Hereford Bulls

Class

1. Bull Calf Jan.1, 09– March 31, 09

Bull Calf Champion

Bull Calf Reserve Champion

2. Sr. Bull Calf Sept. 1, 08- Dec.31, 08

Senior Bull Calf Champion

Senior Bull Calf Reserve Champion

3. Jr. Bull Jan 1, 08-Aug. 31, 08

Jr. Bull Calf Champion

Jr. Bull Calf Reserve Champion

4. Sr. Bull March 1, 07- Dec. 31, 07

Senior Bull Champion

Senior Bull Calf Reserve Champion

*****Grand Champion Bull*****

*****Reserve Grand Champion Bull*****

Hereford Females

Class

5. Heifer Calf Jan. 1, 09- March 31, 09

Heifer Calf Champion

Heifer Calf Reserve Champion

6. Sr. Heifer Calf Sept.1, 08- Dec. 31, 08

Sr. Heifer Calf Champion

Sr. Heifer Calf Reserve Champion

7. Jr. Heifer May 1, 08- Aug. 31, 08

Jr. Heifer Champion

Jr. Heifer Reserve Champion

9. Sr. Heifer March 1, 07- Dec. 31, 07

Sr. Heifer Champion

Sr. Heifer Reserve Champion

10. Cow/Calf under 4

11. Cow/Calf over 4

Grand Champion Cow/Calf

Reserve Grand Champion Cow/ Calf

******Grand Champion Heifer***
Reserve Grand Champion Heifer**

Please Note: Classes may be added or combined due to number of entries.

Final determination of classes for individual bulls and females will be made at closing of entries.

DIVISION 11- Junior

HEREFORDS **Registered Breeding Animals**

Show Date: Saturday, August 1, 2009

Entry Fee: \$15.00 per entry per class

Premiums Offered Per Class

1st	2nd	3rd	4th	5th
\$80	\$65	\$55	\$45	\$35

SHOW CLASSES

Hereford Bulls

Class

1. Bull Calf Jan.1, 09– March 31, 09

Bull Calf Champion

Bull Calf Reserve Champion

2. Sr. Bull Calf Sept. 1, 08- Dec.31, 08

Senior Bull Calf Champion

Senior Bull Calf Reserve Champion

3. Jr. Bull Jan 1, 08-Aug. 31, 08

Jr. Bull Calf Champion

Jr. Bull Calf Reserve Champion

4. Sr. Bull March 1, 07- Dec. 31, 07

Senior Bull Champion

Senior Bull Calf Reserve Champion

*****Grand Champion Bull*****

*****Reserve Grand Champion Bull*****

Hereford Females

Class

5. Heifer Calf Jan. 1, 09- March 31, 09

Heifer Calf Champion

Heifer Calf Reserve Champion

6. Sr. Heifer Calf Sept.1, 08- Dec. 31, 08

Sr. Heifer Calf Champion

Sr. Heifer Calf Reserve Champion

7. Jr. Heifer May 1, 08- Aug. 31, 08

8. Jr. Heifer Jan. 1, 08- April 30, 08

Jr. Heifer Champion

Jr. Heifer Reserve Champion

9. Sr. Heifer March 1, 07- Dec. 31, 07

Sr. Heifer Champion

Sr. Heifer Reserve Champion

10. Cow/Calf under 4

11. Cow/Calf over 4

Please Note: Classes may be added or combined due to number of entries.

Final determination of classes for individual bulls and females will be made at closing of entries.

FEMALE: Eligibility for entry - Calved after January 1, 2009 thru September 1, 2007

BULL: Eligibility for entry - Calved after January 1, 2008 thru January 1, 2007

GROUP CLASSES

Junior Get of Sire - Three animals, both sexes represented, all sired by the same sire, summer yearling age and younger. All animals must have been shown in an individual class.

Get of Sire - Four animals, both sexes represented, all sired by the same sire. All animals must have been shown in an individual class.

GRAND CHAMPION BULL AWARD
Sponsored by Mother Lode Real Investors

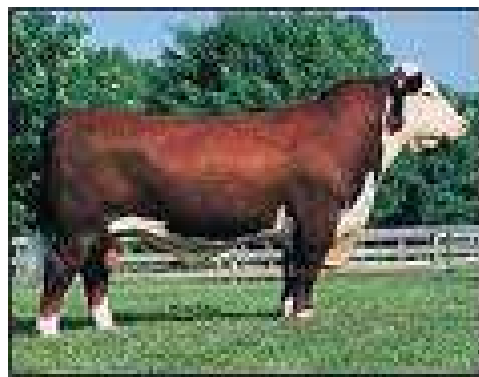
GRAND CHAMPION FEMALE AWARD
Sponsored by Jackson Tire Service

GRAND CHAMPION COW/CALF
Sponsored by Bob & Kathy Hutchison

**PLEASE REMEMBER TO
THANK YOUR
SPONSORS!!!**

1st Bedding Sponsored by The Feed Barn

~Anything other than straw or shavings is prohibited for livestock bedding.~



Herefords are an ancient breed, kept in Herefordshire in western England for centuries. They gained their modern appearance around 1800 by crossing with cattle from Flanders. Originally, Herefords were large framed draught cattle, some weighing over 3,000 pounds. During the nineteenth century there was selective breeding for early maturity, which entailed a reduction in the size of the frame. The first herd book was published in 1846, and later adopted by the 'Hereford Herd Book Society', founded in 1878.

Hereford are medium framed cattle with distinctive red body color with the head and front of the neck, the brisket, underside, and switch in white. They have well developed fore-quarters, a deep brisket, broad head and stocky legs. Most animals have short thick horns that typically curve down at the sides of the head, but there is a polled strain in North America and UK (Polled Hereford).

Herefords are generally docile and fast growing cattle with good beef quality.